

Occurrence and molecular characterization of cucumber mosaic virus (CMV) in plantain orchards in Caldas and Risaralda departments of Colombia

Presencia y caracterización molecular del virus del mosaico del pepino (CMV) en cultivos de plátano de los departamentos de Caldas y Risaralda en Colombia

DIANA MILENA RODRÍGUEZ-MORA¹

LUZ NATALIA MARTÍNEZ-CABALLERO¹

MÓNICA BETANCOURT²

ISABEL MORENO^{1,3}

¹ Corporación Colombiana de Investigación Agropecuaria – Agrosavia, Centro de Investigación Palmira, Palmira (Colombia). ORCID Rodríguez-Mora, D.M.: <https://orcid.org/0000-0001-6545-3746>; ORCID Martínez-Caballero, L.N.: <https://orcid.org/0000-0003-0967-3642>; ORCID Moreno, I.: <https://orcid.org/0000-0001-9257-6645>

² Corporación Colombiana de Investigación Agropecuaria – Agrosavia, Centro de investigación Tibaitatá, Mosquera (Colombia). ORCID Betancourt, M.: <https://orcid.org/0000-0002-6702-9524>

³ Corresponding author. mimoreno@agrosavia.co



Chlorotic streaking and mosaic in plantain leaf.

Photo: M. Betancourt

Last name: RODRÍGUEZ-MORA / MARTÍNEZ-CABALLERO / BETANCOURT / MORENO

Short title: Cucumber mosaic virus (CMV) IN PLANTAIN ORCHARDS

Doi: <https://doi.org/10.17584/rcch.2024v18i3.17841>

Received: 02-07-2024 Accepted: 12-08-2024 Published: 10-09-2024

ABSTRACT

Cucumber mosaic virus (CMV) affects plantain (*Musa AAB*) orchards in most producing regions across the globe. This study aimed to determine the occurrence and characterize the CMV affecting plantain orchards in the departments of Caldas and Risaralda, Colombia. Leaf tissue samples were collected from six municipalities, then they were screened for CMV diagnosis using the enzyme-linked immunosorbent assay (ELISA). The samples with positive reaction were confirmed by reverse transcription polymerase chain reaction (RT-PCR). The results confirmed the presence of CMV with an incidence of 2.8% in the region in study. For the molecular characterization of the virus, a partial region of the RNA-dependent RNA polymerase (RdRp) gene was amplified and sequenced. The sequence analysis showed that the isolates shared nucleotide identities above 97.7% with the GenBank accession MG696855.1, corresponding to a CMV isolate obtained from lulo (*Solanum quitoense*) in Colombia. Phylogenetic analysis grouped the sequences generated in this study with sequences of reference to the subgroup IA. Our results contribute to the update and understanding of CMV population dynamics in this important plantain production region.

Additional key words: CMV; ELISA; molecular detection; *Musa AAB*.

RESUMEN

El virus del mosaico del pepino (CMV) afecta los huertos de plátano (*Musa AAB*) en la mayoría de las regiones productoras del mundo. Este estudio tuvo como objetivo determinar la presencia del CMV, así como su caracterización en huertos de plátano en los departamentos de Caldas y Risaralda, Colombia. Se recolectaron muestras de tejido foliar de seis municipios, luego se analizaron para diagnóstico de CMV mediante ensayo serológico (ELISA) y las muestras con reacción positiva se confirmaron mediante la reacción en cadena de la polimerasa de transcripción inversa (RT-PCR). Los resultados confirmaron la presencia de CMV con una incidencia del 2,8% en la región en estudio. Para la caracterización molecular del virus, se amplificó y secuenció una región parcial del gen de la ARN polimerasa dependiente de ARN

(RdRp). El análisis de secuencia mostró que los aislados comparten identidades de nucleótidos superiores al 97,7% con la accesión GenBank MG696855.1, correspondiente a un aislado de CMV obtenido de lulo (*Solanum quitoense*) en Colombia. El análisis filogenético agrupó las secuencias generadas en este estudio con secuencias de referencia al subgrupo IA. Los resultados de este estudio contribuyen al conocimiento y actualización de la dinámica poblacional de CMV en esta importante región productora de plátano.

Palabras clave adicionales: CMV; ELISA; detección molecular; *Musa* AAB.

INTRODUCTION

Colombia reported in 2022 approximately 434,723 ha under cultivation and a plantain production of 4,460,748 tons (MinAgricultura, 2024), with 'Dominico Hartón' being the most widely commercially grown cultivar (Catellanos and Lucas, 2011). Viral diseases are considered significant phytosanitary constraints reported for the crop. Among them, banana mosaic disease (BMD), caused by cucumber mosaic virus (CMV) (Stover, 1972), has been a prominent global concern. CMV exhibits a broad geographical distribution and infects numerous hosts, encompassing over 1,300 species distributed across more than 100 families of monocotyledons and dicotyledons, including fruits, vegetables, and forages (Joshi *et al.*, 2023b). CMV is transmitted through seeds, tools, and by species of aphids in a non-persistent manner (Khaled-Gasmi *et al.*, 2023). CMV has been documented in all major *Musa* sp. production regions in several countries, such as Argentina (Cabrera *et al.*, 2018), Ecuador (Buitrón-Bustamante and Morillo-Velastegui, 2017), Ethiopia (Kebede and Majumder, 2021), India (Joshi *et al.*, 2023a), and Turkey (Fidan and Koç, 2019). In Colombia, CMV has been identified in the departments of Valle del Cauca, Risaralda, Quindío, and Caldas, affecting both plantain and banana crops (Belalcázar *et al.*, 1996; López-Cardona *et al.*, 2014). The symptoms induced by CMV are variable, and their expression level depends on the virus strain, the species, and the host plant (Joshi *et al.*, 2023b). In plantains and bananas, the most characteristic symptom is leaf mosaic, but in advanced stages of the disease, it can lead to pseudostem rot, flag leaf necrosis, stunted growth, and eventual plant collapse (López-Cardona *et al.*, 2014; Manzo-Sánchez *et al.*, 2014). CMV belongs to the *Cucumovirus* genus, *Bromoviridae* family (Joshi *et al.*, 2023b). It is composed of a tripartite genome of positive-sense, single-stranded RNA (RNA 1, RNA 2, and RNA 3) and an additional subgenomic RNA (RNA 4) derived from RNA 3. RNA 1 and RNA 2

encode proteins 1a and 2a, respectively and both participate in virus replication (Hayes and Buck, 1990). RNA 2 also encodes protein 2b, which functions as a post-transcriptional gene silencing suppressor and is involved in symptom induction in the host plant (Palukaitis and García-Arenal, 2003). RNA 3 encodes protein 3a, which is involved in cell-to-cell virus movement (Khan *et al.*, 2012), and protein 3b, the capsid protein CP (Mochizuki and Ohki, 2012). The subgenomic RNAs (RNA 4 and RNA 4A) also encode CP (Jacquemond, 2012). Based on phylogenetic analysis, CMV was first categorized into two subgroups, I (A and B) and II (Anderson *et al.*, 1995; Roossinck *et al.*, 1999). However, a complete genome analysis of CMV strains showed that some strains did not cluster into subgroups I and II, leading to their classification into a new subgroup called subgroup III (Liu *et al.*, 2009). Strains of the virus that do not cluster within the three subgroups have also been found, representing recombinant variants of the virus (Thompson *et al.*, 2015). Subgroups IA and II are distributed globally, and subgroup IB, originally from Asia (Roossinck, 2001), has also been reported in other regions, including Nigeria (Apalowo *et al.*, 2022), the United States (Nouri *et al.*, 2014), and Ecuador (Ganchozo-Mendoza *et al.*, 2024). Subgroup III has been documented in China (Liu *et al.*, 2009). CMV strains belonging to subgroup I are regarded as more virulent than those in subgroup II (Li *et al.*, 2020).

CMV has held a significant position among the viruses affecting plantain orchards in Colombia due to the reported yield losses. In the region in study, losses exceeding 50% have been reported in 'Dominico Hartón' (López-Cardona *et al.*, 2014). However, there is limited and outdated information available regarding the virus's incidence and genetic characteristics. Therefore, this study aims to determine the occurrence of CMV in 'Dominico Hartón' orchards in the departments of Caldas and Risaralda; and to characterize the virus at the molecular level, as a contribution to disease prevention and implementation of integrated management strategies.

MATERIALS AND METHODS

Location

Six plantain farms were selected across six municipalities: Belalcázar, Risaralda, Chinchiná in Caldas department, and Marsella, Belén de Umbría, Apía in Risaralda department, Colombia (Fig. 1). These farms were characterized by the presence of foliar symptoms associated with viral

diseases in a survey conducted from June to October 2020. In each farm, a zigzag random survey was conducted within the cultivated area (Gauhl *et al.*, 1999).

Plant material collection

Symptoms associated with viral diseases were recorded, and 30 leaf tissue samples were randomly collected from each farm, including both symptomatic (chlorotic streaking and mosaic) and asymptomatic plants, for a total of 180 samples. This collection was conducted under a permit issued by the Colombian National Authority for Environmental Permits (resolution N°. 1466, December 3, 2014). The samples consisted of the central region of the complete foliar surface, including the central vein of the third-youngest leaf of each plant (López-Cardona *et al.* 2014; Mateus-Cagua and Rodríguez-Yzquierdo, 2019). Each sample was placed in a paper bag and then in a resealable plastic bag (ziplock®), properly labeled, and stored at 4°C. The samples were processed and preserved at the Molecular Biology Laboratory of the Colombian Agricultural Research Corporation-AGROSAVIA, Palmira, research station.

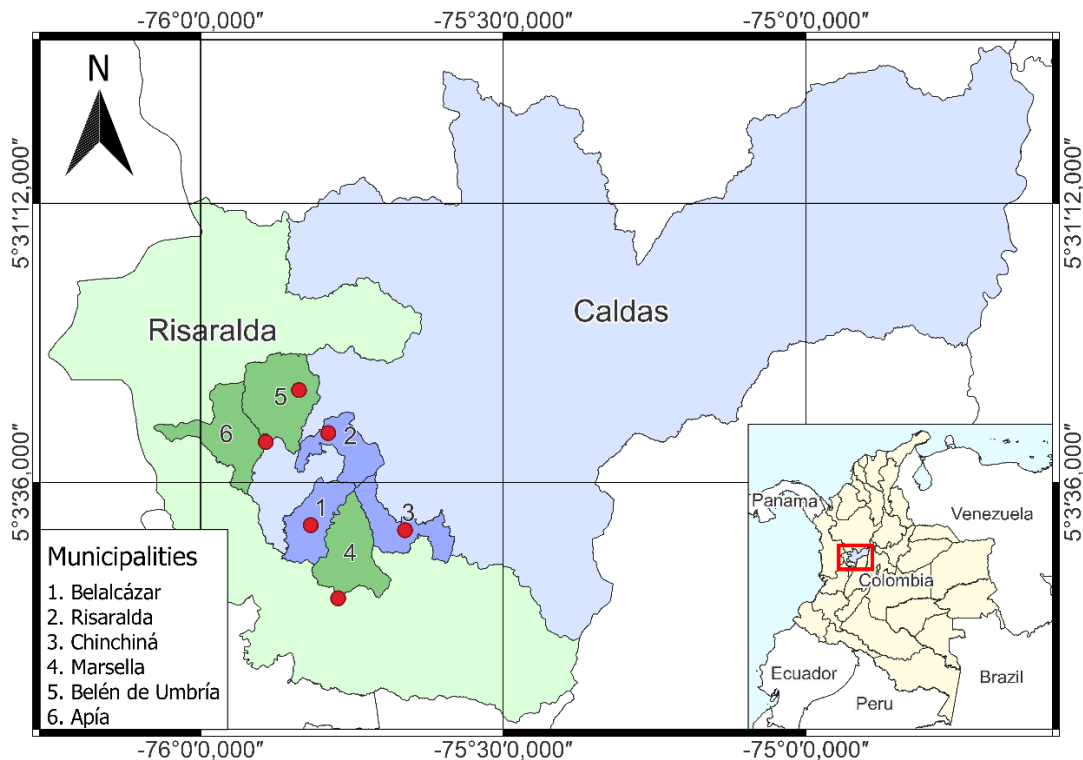


Figure 1. Geographical location of the selected farms for sample collection. The red dots indicate the six farms selected in the municipalities of the departments of Caldas and Risaralda, Colombia. Source: K. Rodríguez and L.-N. Martínez.

Serological CMV detection

The collected plantain leaf tissue samples ($n=180$) were analyzed for CMV detection using the ELISA assay by Agdia®, following the manufacturer's recommendations. The analysis of the samples was carried out in duplicate. As a blank control 1X extraction buffer (GEB) was included, while healthy plant tissue was used as a negative biological control. Additionally, infected plant tissue with CMV, commercially obtained from Agdia®, was used as a positive control. Colorimetric results were quantified at 30, 60, and 120 min after incubation at an absorbance of 405 nm using an Epoch model - microplate spectrophotometer (Bio Tek®). Results were considered positive when the optical density (O.D.) value exceeded the average of the negative control plus three times the standard deviation of the set of negative samples. The results obtained with the ELISA technique for each of the evaluated samples were recorded as either positive or negative. Based on this data, the disease incidence in the study region was determined using the following formula: Disease incidence (%) = (Number of infected plants / Total number of analyzed plants) * 100 (El Gamal *et al.*, 2022).

Molecular CMV detection

The samples that showed a positive reaction in the ELISA test were used for the molecular characterization of the virus. RNA extraction from leaf tissue samples was performed using the CTAB protocol described by Chang *et al.* (1993). Complementary DNA (cDNA) was synthesized following the instructions provided in the Verso cDNA Synthesis kit (ThermoScientific®) and stored at -20°C. The quality of the cDNA was verified by amplifying a region of the 18S ribosomal RNA (rRNA) using the primer pair 18SF 5' GAGAAACGGCTACCACATCCA 3' and 18SR 5' CGTGCCATCCCAAAGTCCAAC 3', following the conditions reported by Du *et al.* (2006). For each reaction 1X My Taq Red Mix 2X, 0.2 µM of each primer and 1 µL of cDNA were added for master mix preparation in a final volume of 12.5 µL. The amplification program consisted of an initial denaturation step at 95°C for 5 min, followed by 35 cycles of an initial step at 95°C for 30 s, 52°C for 60 s, 72°C for 60 s, and a final elongation at 72°C for 10 min. CMV detection was performed by amplifying a partial region of the RNA-dependent RNA polymerase gene using the primer pair CMVF 5' TAACCTCCCAGTTCTCACCGT 3' and CMVR 5' CCATCACCTTAGCTTCCATGT 3', following the conditions reported by Grieco *et al.* (2000). For each reaction 1X My Taq Red Mix

2X, 0.2 μ M of each primer and 1 μ L of cDNA were added for master mix preparation in a final volume of 12.5 μ L. The amplification program consisted of an initial denaturation step at 95°C for 5 min, followed by 35 cycles of an initial step at 95°C for 45 s, 52°C for 30 s, 72°C for 60 s, and a final elongation at 72°C for 10 min. The amplification process was carried out using an Agilent Technologies SureCycler 8800 thermocycler. The amplified products were visualized on a 1.6% agarose gel, dyed with GelRed (Biotium) using the gel documentation system Enduro GDS (Labnet).

Nucleotide identity and phylogenetic analysis

Purification of the amplified PCR products was done using the Qiagen® QIAquick PCR & Gel Cleanup kit (Qiagen, Germany) and sent for amplicon direct sequencing to Macrogen Inc., Seoul. Sequences were cleaned, assembled, and aligned using Geneious Prime® 2021.0.3 software. The nucleotide identity was determined by homology with sequences in the NCBI (National Center for Biotechnology Information) using the BLASTN (Basic Local Alignment Search Tool), (<https://blast.ncbi.nlm.nih.gov/Blast.cgi>, accessed in August 2023). In order to determine the clustering of CMV isolates affecting plantain orchard in the departments of Caldas and Risaralda, a phylogenetic analysis was performed using the sequences generated in this study. A group of twenty reference sequences of a partial region of the RNA-dependent RNA polymerase gene, representing subgroups I (A and B), II, and III from different crops and reported in various parts of the world, were retrieved from GenBank. An isolate of peanut stunt virus (accession NC_002039.1) was used as an outgroup. Sequence alignment was conducted using the ClustalW program in MEGA6 version 11.0.11 (Tamura *et al.*, 2021). A consensus alignment of 485 positions was used to infer the phylogenetic relationships of the CMV isolates using the maximum likelihood method, with the T92+G substitution model best fitting the data, and bootstrap values were calculated using 1,000 random subsamples.

RESULTS AND DISCUSSION

Plant material collection

From the group of samples collected, 25 out of 180 (13.9%) exhibited symptoms associated with viral diseases. In the department of Caldas, a higher proportion of symptomatic plants was

observed (16.6%), with a distribution of 8.9% in the municipality of Chinchiná, followed by Belalcázar and Risaralda with 4.4% and 3.3%, respectively. In the department of Risaralda, 11.1% of plants exhibited viral symptoms, distributed across the municipalities of Marsella (5.6%), Belén de Umbría (3.3%), and Apía (2.2%). Similar results were found by Alarcón *et al.* (2005), who observed symptoms indicative of viral diseases in various plantain and banana cultivars established in an experimental farm in the municipality of Palestina (Caldas) with incidences ranging from 2% to 24%. These findings are consistent with those reported by Belalcázar *et al.* (1996), who observed an incidence of 24% for CMV in Gros Michel established in the municipality of Caicedonia (Valle del Cauca). Regarding the characteristics of symptoms, these primarily appeared on the leaf surface, with chlorotic streaks (14/25) and general chlorosis of the lamina (7/25) being the most characteristic symptoms, while mosaic was observed less frequently (4/25) (Fig. 2A, B). During sample collection, some plants displaying symptoms such as flag leaf necrosis and pseudostem splitting were also observed (Fig 2C, D). In some cases, phyllotaxis alteration was noted as well (Fig. 2E). This general symptom description has been previously reported in plantain and banana crops associated with viral diseases (López-Cardona *et al.*, 2014; Selvarajan, 2015; Bhat *et al.*, 2016; James *et al.*, 2021).

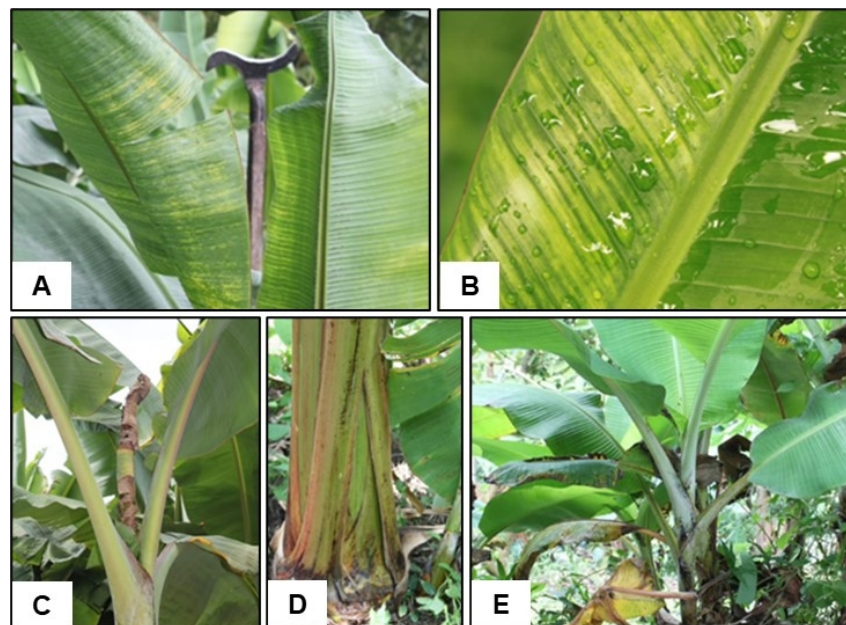


Figure 2. Symptoms of viral infections in 'Dominico Hartón' cultivar. A) Chlorotic streaking, B) Mosaic, C) Flag leaf necrosis, D) Pseudostem splitting, E) Plant phyllotaxis alteration. Source: M. Betancourt.

Serological CMV detection

Out of the 180 analyzed samples, five showed a positive reaction to CMV. Specifically, four of these positive samples originated from the department of Caldas, and one was from the department of Risaralda. The average absorbance values for the samples exhibiting a positive reaction to the virus ranged from 2.965 to 3.800 nm. The positive control displayed an average absorbance of 3.632 nm, while the negative control exhibited 0.142 nm, and the blank control registered 0.128 nm, thus demonstrating the reliability of the test (Koua *et al.*, 2020). Based on the results, the incidence of CMV in the study region was 2.8%, with a distribution per department of 4.4% (4/90) in Caldas and 1.1% (1/90) in Risaralda. The use of the ELISA technique for the detection and diagnosis of CMV in plantains has recognized advantages as it provides a reliable diagnosis due to its high degree of sensitivity, specificity, and reproducibility (Vidal *et al.*, 2012). Furthermore, it can be used as a screening test, allowing for the analysis of samples on a large scale, from symptomatic and asymptomatic plants, where the virus can be present in early infection stages and at low concentrations (Koua *et al.*, 2020). ELISA has been widely used for CMV detection with satisfactory results in *Musa* sp. (López-Cardona *et al.*, 2014; Cabrera *et al.*, 2018; Viswanath *et al.*, 2021).

Molecular CMV detection

For the molecular characterization, the RNA extracted from the CMV positive samples tested by ELISA yielded concentrations ranging from 555.1 to 2,916 ng μL^{-1} , with absorbance 260/280 and 260/230 ratios ranging between 2.09-2.23 and 2.09-2.37, respectively. The amplification of the 18S rRNA region resulted in a fragment of approximately 250 bp in all analyzed samples (Fig 3. A), consistent with the size reported by Du *et al.* (2006), indicating proper cDNA synthesis. The RT-PCR results confirmed the presence of CMV, the expected fragment of approximately 513 bp (Grieco *et al.*, 2000) was amplified in each of the samples (Fig. 3B).

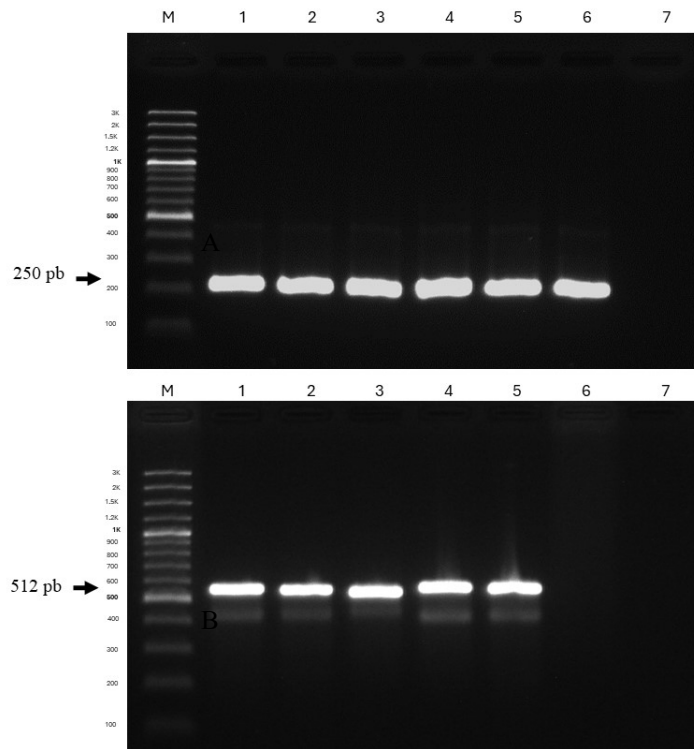


Figure 3. Agarose gel electrophoresis of RT-PCR amplified products from *Musa* sp. A) 18S RNAr region and B) RNA2 CMV region using CMVF/CMVR primers. M: Molecular weight marker of 100 bp. Lines 1,2, 3, 4 and 5 correspond to PB001, PR058, PP065, PP067 samples from Caldas and PR157 sample from Risaralda, respectively. 6: Biological negative control. 7: no template control.

Nucleotide identity and phylogenetic analysis

The analysis of the sequences obtained in this study revealed nucleotide identities ranging from 97.7% to 98.7% with the GenBank accession MG696855.1, corresponding to a CMV strain obtained from lulo (*S. quitoense*) in Colombia. The five consensus sequences generated in this study were deposited in GenBank with accession numbers OR588863, R588864, OR588865, OR588866, and OR588867. In the phylogenetic tree, three well-defined groups were formed among the 20 sequences retrieved from GenBank, consisting of subgroups I (A and B), II, and III. The analysis revealed that the four CMV strains obtained in Caldas and the CMV strain from Risaralda exhibited closer phylogenetic relationships with accessions from subgroup IA (Fig. 4). This result is consistent with what Roossinck (2001) reported, where subgroup IA is described as having a worldwide distribution, including previous reports in the Americas (Rivera-Toro *et al.*, 2020; Bello *et al.*, 2023).

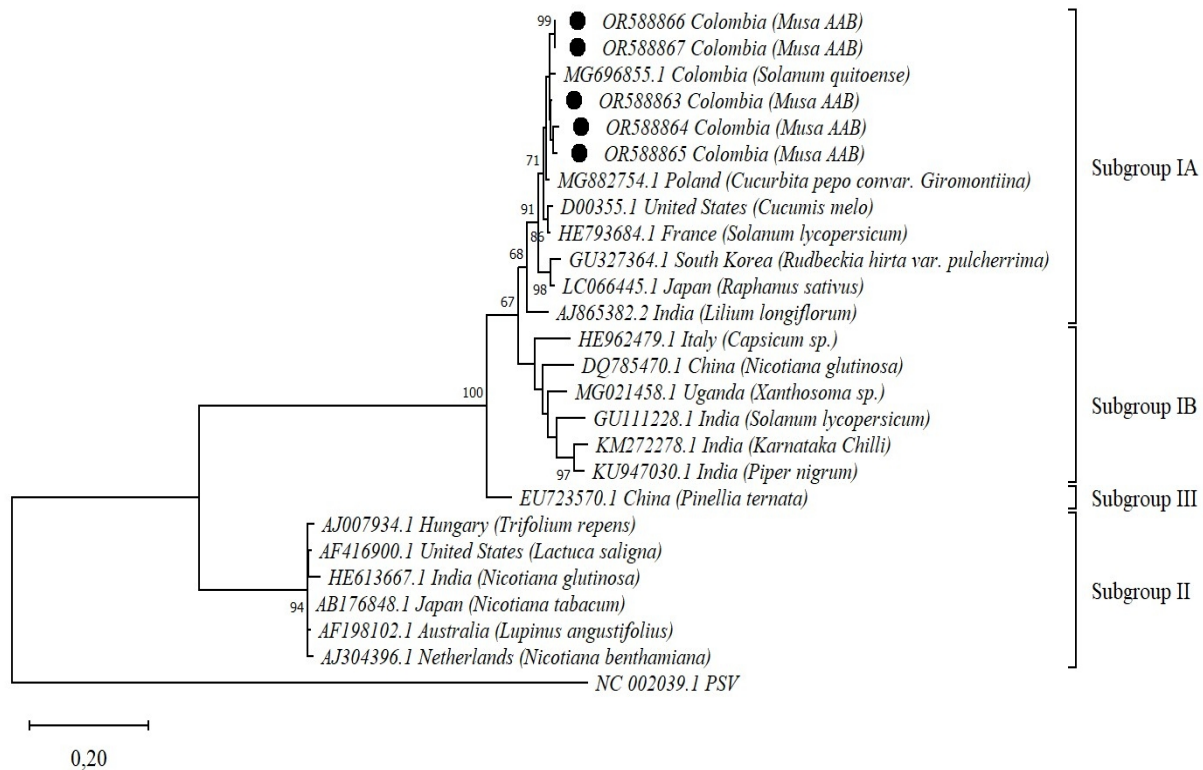


Figure 4. Phylogenetic tree generated from the alignment of 485 positions of a partial region of RNA-dependent RNA polymerase (RdRp) gene of CMV. The analysis illustrates the relationship between CMV strains detected in 'Dominico Hartón' in Colombia indicated by black dots and those retrieved from GenBank.

In this study, we report a low incidence of CMV in farms cultivating 'Dominico Hartón' in the Caldas and Risaralda departments. Conversely, previous studies reported higher CMV incidences in this cultivar in the region. Initially, Reichel *et al.* (1996b) determined a virus incidence of 31% in the Quindío department, affecting 'Dominico Hartón' orchards based on serological tests. Later, Alarcón *et al.* (2005) reported a 15% incidence of CMV in 'Dominico Hartón' plants in experimental plots and in the *Musa* sp. collection established at the Montelindo farm of the Universidad de Caldas, in the municipality of Palestina (Caldas). Similarly, in the study conducted by López-Cardona *et al.* (2014), CMV incidences below 14% were found in 'Dominico Hartón' orchards in the departments of Quindío (12%), Caldas (12%), and Risaralda (14%). Although changes in factors such as climatic and agroecological conditions in the production areas, management practices, planting systems (monoculture, polyculture), and the quality of planting material could affect the dynamics of the virus population, we could not establish an association with those factors under the conditions of our study. Samples were

collected in a survey conducted from June to October 2020. During this period, the climatic data did not show significant changes, with temperature and relative humidity ranges between 16-18°C and 85-87%, respectively, and a higher level of precipitation (148 mm) during plant collection in July in the municipalities of Chinchiná and Marsella (Caldas). Additionally, the explored farms presented both monoculture and polyculture production systems, the latter mostly in association with coffee plantations, and vegetative propagation is established using their own plant material. It has also been reported that changes in climatic conditions can influence the multiplication of vector insect populations, virus dispersion, and transmission (Pérez-Vicente and Porras, 2015), but in our study, the presence of aphids in the fields were not recorded. Therefore, to test the hypothesis of a reduction in CMV incidence in this region over time, further complementary studies on the population dynamics of CMV and its vector in the region will be required.

On the other hand, the results of this research showed that the presence of CMV could be associated with both symptomatic and asymptomatic samples. Four out of the five samples with a positive reaction to CMV exhibited viral symptoms characterized by chlorotic mosaic and leaf streaking, typical symptoms of CMV infections (Koua *et al.*, 2020, Bae *et al.*, 2021). However, one sample was asymptomatic. Similar results are reported in studies conducted by Buitrón-Bustamante and Morillo-Velastegui (2017), who detected the presence of CMV in plants without symptoms associated with viral infections, highlighting the need to monitor nursery plants to ensure virus-free planting material and prevent the movement of contaminated plants to disease-free areas. In contrast, considering the random nature of the sample collection, there was a percentage of plants with viral symptoms that were not associated with CMV. These plants could potentially be infected with other viruses reported in *Musa* sp. in the country, such as banana streak viruses (BSVs) (Reichel *et al.*, 1996b), banana mild mosaic virus (BanMMV) (Reichel *et al.*, 2003), and banana streak Obino l'Ewai virus (BSOLV) (López-Cardona *et al.*, 2014). Previous study conducted in the region has reported single infections of BSOLV affecting 'Dominico Hartón' orchards with an incidence of 12% (López-Cardona *et al.*, 2014), and mixed infections of BSV/CMV (60%) and BSOLV/CMV (<1%) (Reichel *et al.*, 1996b; López-Cardona *et al.*, 2014). Additionally, we report the presence in the study region of CMV strains classified in subgroup IA, contributing to the knowledge of the virus in the region. CMV strains classified in subgroup IA have been identified in *Musa* sp. in different parts of the world (Cabrera *et al.*, 2018;

Koua *et al.*, 2020), and it has been emphasized that strains from subgroup I induce more severe disease in hosts (Li *et al.*, 2020). Although in our country there is insufficient phylogenetic information about CMV infecting *Musa* sp., a preliminary analysis found similar results. In this study, the characterization of the capsid protein of two CMV isolates obtained from 'Dominico Hartón' plantains and Gros Michel bananas was conducted, revealing a high degree of conservation with members of subgroup I (Reichel *et al.*, 1996a), subsequently reclassified as subgroup IA by Rivera-Toro *et al.* (2020).

Taking everything into account, it is necessary to expand this research within the region and in other plantain-producing areas of Colombia to confirm the dynamics of CMV populations. Additionally, it is important to determine whether the findings of this study are part of a broader trend influenced by management practices, the use of healthy planting material, agroecological factors, or the presence of more widely distributed viral species.

CONCLUSION

CMV was found in low incidence in plantain orchards cultivated with 'Dominico Hartón' in Caldas and Risaralda departments, Colombia. The CMV sequences generated in this study were grouped with GenBank reference sequences to subgroup IA. This study contributes to updating the CMV status in an important plantain production region for the country and highlights the need for complementary studies to determine the prevalence, incidence, and distribution of this and other viruses affecting the crop. This is essential to developing effective control measures to minimize losses caused by viral diseases in the crop at the national level.

Acknowledgments

The authors would like to thank the plantain producers in the departments of Caldas and Risaralda, as well as the team at the La Selva research station, Agrosavia located in Manizales, for their assistance in selecting farms and collecting plant material, and to K. Rodriguez for sequence editing and analysis. They also express gratitude to the *Ministerio de Agricultura y Desarrollo Rural* of Colombia for funding this research. This study is part of the project "Technological alternatives for the production and processing of plantain crops, ID 1000734".

Conflict of Interest: No potential conflict of interest was reported by the authors. The funders had no role in the design of the study; in the data analysis; in the writing of the manuscript; or in the decision to publish the results.

Author's contributions: D.M. Rodríguez-Mora: methodology, research, formal analysis, writing – original draft, writing – review and editing. L.N. Martínez-Caballero: methodology, research, formal analysis, writing – original draft, writing – review and editing. M. Betancourt: methodology, resources, funding acquisition, project administration. I. Moreno: conceptualization, methodology, research, formal analysis and interpretation, supervision, writing – original draft, writing – review – editing and translation.

BIBLIOGRAPHIC REFERENCES

Alarcón, J.J., J. Castaño, M. Aristizábal, and M. Betancourt. 2005. Reconocimiento de enfermedades virales en plátano y banano en la granja Montelindo, municipio de Palestina (Caldas), Colombia. pp. 238-241. In: Castaño, J. (ed.). Memorias II Seminario Internacional Sobre Producción, Comercialización e Industrialización de Plátano. Corpoica, Manizales, Colombia.

Anderson, B.J., P.M. Boyce, and C.L. Blanchard. 1995. RNA 4 sequences from cucumber mosaic virus subgroup I and II. *Gene* 161(2), 293-294. Doi: [https://doi.org/10.1016/0378-1119\(95\)00276-C](https://doi.org/10.1016/0378-1119(95)00276-C)

Apalowo, O.A., A.O. Adediji, O.S. Balogun, T.I. Fakolujo, J.M. Archibong, N.B. Izuogu, M.A. Abdelgawad, M.M. Ghoneim, S. Mustapha, F.S.I. Qashqari, G.E. Batiha, and G.I. Atiri. 2022. Genetic structure of cucumber mosaic virus from natural hosts in Nigeria reveals high diversity and occurrence of putative novel recombinant strains. *Front. Microbiol*, 13, 753054. Doi: <https://doi.org/10.3389/fmicb.2022.753054>

Bae, M., H.-J. Lee, S. Joo, B. Kim, M.-R. Park, and R.-D. Jeong. 2021. First report of cucumber mosaic virus infecting banana (*Musa* spp.) in Korea. *J. Plant Pathol.* 103(3), 1075. Doi: <https://doi.org/10.1007/s42161-021-00882-6>

Belalcázar, S., M.I. Arcila, J.A. Valencia, H. Reichel, and J. Narváez. 1996. Efecto del virus del mosaico del pepino, CMV, sobre los parámetros de crecimiento, desarrollo y producción del clon de banano Gros Michel. pp. 88-94. In: Tecnología del Eje Cafetero para la siembra y explotación rentable del cultivo del plátano. Comité Departamental de Cafeteros del Quindío, Armenia, Colombia.

Bello, V.H., L. Carpin, H.J. Lorenzi, J.A.M. Rezende, and E.W. Kitajima. 2023. Natural occurrence of cucumber mosaic virus infecting *Physalis peruviana* plants in Brazil. J. Phytopathol. 171(4-5), 143-144. Doi: <https://doi.org/10.1111/jph.13165>

Bhat, A.I., T. Hohn, and R. Selvarajan. 2016. Badnaviruses: the current global scenario. Viruses 8(6), 177. Doi: <https://doi.org/10.3390/v8060177>

Buitrón-Bustamante, J.L. and L.E. Morillo-Velastegui. 2017. Estandarización de un método de detección molecular del Cucumber mosaic virus (CMV) en banano ecuatoriano. Rev. Corpoica Cienc. Tecnol. Agropecuaria 18(1), 113-124. Doi: http://doi.org/10.21930/rcta.vol18_num1_art:562

Cabrera, D., M. Jaramillo, J. Villarreal, C. Nome, C. Torres, O. Portal, and F. Giolitti. 2018. Cucumber mosaic virus infecting 'Cavendish' banana in Argentina. Australasian. Plant Dis. Notes 13, 36. Doi: <http://doi.org/10.1007/s13314-018-0322-5>

Catellanos, F.G. and J.C. Lucas. 2011. Caracterización física del fruto en variedades de plátano cultivadas en la zona cafetera de Colombia. Acta Agron. 60(2), 176-182.

Chang, S., J. Puryear, and J. Cairney. 1993. A simple and efficient method for isolating RNA from pine trees. Plant Mol. Biol. Rep. 11, 113-116. Doi: <https://doi.org/10.1007/BF02670468>

Du, Z., J. Chen, and C. Hiruki. 2006. Optimization and application of a multiplex RT-PCR system for simultaneous detection of five potato viruses using 18S rRNA as an internal control. *Plant Dis.* 90(2), 185-189. Doi: <https://doi.org/10.1094/PD-90-0185>

Fidan, H. and G. Koç. 2019. Occurrence, ecology, and phylogeny of banana streak badnavirus (BSV) and cucumber mosaic cucumovirus (CMV) in *Musa* sp. production areas of the Mediterranean coastline of Turkey. *Appl. Ecol. Environ. Res.* 17(3), 5935-5951 Doi: https://doi.org/10.15666/aecer/1703_59355951

Ganchozo-Mendoza, E., A.F.F. Quadros, F.M. Zerbini, F.J. Flores, and F.R. Garcés-Fiallos. 2024. Characterization and genome analysis of *Cucumber mosaic virus* on commercial tobacco plants in Ecuador. *Trop. Plant Pathol.* 49, 480-488. Doi: <https://doi.org/10.1007/s40858-024-00643-7>

Gauhl, F., C. Pasberg-Gauhl, B.E.L. Lockhart, J. d'A. Hughes, and G. Dahal. 1999. Incidence and distribution of banana streak badnavirus in the plantain production region of southern Nigeria. *Int. J. Pest Manag.* 45(3), 167-171. Doi: <https://doi.org/10.1080/096708799227752>

Grieco, F., R. Alkowni, M. Saponari, V. Savino, and G.P. Martelli. 2000. Molecular detection of olive viruses. *EPPO Bull.* 30(3-4), 469-473. Doi: <https://doi.org/10.1111/j.1365-2338.2000.tb00931.x>

Hayes, R.J. and K.W. Buck. 1990. Complete replication of a eukaryotic virus RNA in vitro by a purified RNA-dependent RNA polymerase. *Cell* 63(2), 363-368. Doi: [https://doi.org/10.1016/0092-8674\(90\)90169-F](https://doi.org/10.1016/0092-8674(90)90169-F)

Jacquemond, M. 2012. Cucumber mosaic virus. *Adv. Virus Res.* 84, 439-504. Doi: <https://doi.org/10.1016/B978-0-12-394314-9.00013-0>

James, A.P., D.B. Kidanemariam, S.D. Hamill, J.L. Dale, and R.M. Harding. 2021. Infectivity of an infectious clone of banana streak CA virus in A-genome bananas (*Musa acuminata* ssp.). *Viruses* 13(6), 1071. Doi: <https://doi.org/10.3390/v13061071>

Joshi, M., T.K. Narute, and M. Dawale. 2023a. Prevalence and distribution of cucumber mosaic virus disease of banana in major banana growing districts of Western Maharashtra state during 2021-2022. *Pharma Innov. J.* 12(9), 1808-1810.

Joshi, M., T.K. Narute, and D. Sarnobat. 2023b. The cucumber mosaic virus: a review. *Int. J. Plant Soil Sci.* 35(24), 253-260. Doi: <https://doi.org/10.9734/ijpss/2023/v35i244316>

Kebede, Y. and S. Majumder. 2021. Molecular characterization of *Cucumber mosaic virus* subgroup IB infecting Cavendish banana plants in Ethiopia. *J. Plant Prot. Res.* 61(4), 392-401. Doi: <https://doi.org/10.24425/jppr.2021.139249>

Khaled-Gasmi, W., R. Souissi, and S. Boukhris-Bouhachem. 2023. *Cucumber mosaic virus* epidemiology in pepper: aphid dispersal, transmission efficiency and vector pressure. *Ann. Appl. Biol.* 182(1), 101-111. Doi: <https://doi.org/10.1111/aab.12798>

Khan, S., A.T. Jan, B. Mandal, and Q.M.R. Haq. 2012. Immunodiagnosics of cucumber mosaic virus using antisera developed against recombinant coat protein. *Arch. Phytopathol. Plant Prot.* 45(5), 561-569. Doi: <https://doi.org/10.1080/03235408.2011.588043>

Koua, D.K., A. Ebou, T.K. Kouadio, P. Lepoivre, and S. Massart. 2020. *Cucumber mosaic virus* and their associated satellite RNAs infecting banana (*Musa* sp. *Genomic group AAA*) in Côte d'Ivoire: a molecular characterization. *BioRxiv* 2020.11.17.386326. Doi: <https://doi.org/10.1101/2020.11.17.386326>

Li, N., C. Yu, Y. Yin, S. Gao, F. Wang, C. Jiao, and M. Yao. 2020. Pepper crop improvement against cucumber mosaic virus (CMV): a review. *Front. Plant Sci.* 11, 598798. Doi: <https://doi.org/10.3389/fpls.2020.598798>

Liu, Y.Y., S.L. Yu, Y.F. Lan, C.L. Zhang, S.S. Hou, X.D. Li, X.Z. Chen, and X.P. Zhu. 2009. Molecular variability of five Cucumber mosaic virus isolates from China. *Acta Virol.* 53(2), 89-97. Doi: https://doi.org/10.4149/av_2009_02_89

López-Cardona, N., B. Villegas-Estrada, and R.E. Arango-Isaza. 2014. Evaluación de incidencia y pérdidas ocasionadas por virus que afectan cultivos de plátano y banano (*Musa* spp.) en la zona central cafetera. *Agron.* 22(1), 22-35.

Manzo-Sánchez, G., M. Orozco-Santos, L. Martínez-Bolaños, E. Garrido-Ramírez, and B. Canto-Canche. 2014. Enfermedades de importancia cuarentenaria y económica del cultivo de banano (*Musa* sp.) en México. *Rev. Mex. Fitopatol.* 32(2), 89-107.

Mateus-Cagua, D. and G. Rodríguez-Yzquierdo. 2019. Effect of biostimulants on dry matter accumulation and gas exchange in plantain plants (*Musa* AAB). *Rev. Colomb. Cienc. Hortic.* 13(2), 151-160. Doi: <https://doi.org/10.17584/rcch.2019v13i2.8460>

MinAgricultura, Ministerio de Agricultura y Desarrollo Rural Colombia. 2024. Agronet: área, producción y rendimiento nacional por cultivo – plátano/plátano exportación. In: <https://www.agronet.gov.co/estadistica/Paginas/home.aspx?cod=1>; consulted: April, 2024.

Mochizuki, T. and S.T. Ohki. 2012. *Cucumber mosaic virus*: viral genes as virulence determinants. *Mol. Plant Pathol.* 13(3), 217-225. Doi: <https://doi.org/10.1111/j.1364-3703.2011.00749.x>

Nouri, S., R. Arevalo, B.W. Falk, and R.L. Groves. 2014. Genetic structure and molecular variability of *Cucumber mosaic virus* isolates in the United States. *Plos One* 9(5), e96582. Doi: <https://doi.org/10.1371/journal.pone.0096582>

Palukaitis, P. and F. García-Arenal. 2003. Cucumoviruses. *Adv. Virus Res.* 62, 241-323. Doi: [https://doi.org/10.1016/S0065-3527\(03\)62005-1](https://doi.org/10.1016/S0065-3527(03)62005-1)

Pérez-Vicente, L. and A. Porras. 2015. Impacto potencial del cambio climático sobre las plagas de bananos y plátanos en Cuba. Fitosanidad 19(3), 201-211.

Reichel, H., S. Belalcázar, G. Múnera, E. Arévalo, and J. Narváez. 1996a. First report of Banana streak virus infecting plantains (*Musa* spp.) in Colombia. Plant Dis. 80(4), 463.

Reichel, H., L. Mariño, J. Kummert, S. Belalcázar, and J. Narváez. 1996b. Caracterización del gen de la proteína de la cápsida de dos aislamientos del virus del mosaico del pepino (CMV), obtenidos de plátano y banano (*Musa* spp). Corpoica Cienc. Tecnol. Agropecu. 1(1), 1-5. Doi: https://doi.org/10.21930/rcta.vol1_num1_art:145

Reichel, H., A.K. Martínez, J.A. Arroyave, R. Sedano, F.J. Morales, O. Duterme, J. Kummert, and P. Lepoivre. 2003. First report of *Banana mild mosaic virus* isolated from plantains (*Musa* AAB) in Colombia. Plant Dis. 87(9), 1150. Doi: <https://doi.org/10.1094/PDIS.2003.87.9.1150C>

Rivera-Toro, D.M., J.C. Vaca-Vaca, and K. López-López. 2020. Detection and molecular characterization of the cucumber mosaic virus in chili pepper (*Capsicum* spp. L.) crops. Agron. Colomb. 38(2), 218-225. Doi: <https://doi.org/10.15446/agron.colomb.v38n2.82975>

Roossinck, M.J. 2001. *Cucumber mosaic virus*, a model for RNA virus evolution. Mol. Plant Pathol. 2(2), 59-63. Doi: <https://doi.org/10.1046/j.1364-3703.2001.00058.x>

Roossinck, M.J., L. Zhang, and K.-H. Hellwald. 1999. Rearrangements in the 5' nontranslated region and phylogenetic analyses of Cucumber mosaic virus RNA 3 indicate radial evolution of three subgroups. J. Virol. 73(8), 6752-6758. Doi: <https://doi.org/10.1128/JVI.73.8.6752-6758.1999>

Selvarajan, R. 2015. Viral diseases of banana. CABI Rev. 2015, 1-16. Doi: <https://doi.org/10.1079/PAVSNNR201510050>

Stover, R.H. 1972. Banana, plantain and abaca diseases. Commonwealth Mycological Institute, Kew, UK.

Tamura, K., G. Stecher, and S. Kumar. 2021. MEGA11: molecular evolutionary genetics analysis version 11. *Mol. Biol. Evol.* 38(7), 3022-3027. Doi: <https://doi.org/10.1093/molbev/msab120>

Thompson, J.R., J.L. Langenhan, M. Fuchs, and K.L. Perry. 2015. Genotyping of *Cucumber mosaic virus* isolates in western New York State during epidemic years. characterization of an emergent plant virus population. *Virus Res.* 210, 169-177. Doi: <https://doi.org/10.1016/j.virusres.2015.07.028>

Vidal, E., R.K. Yokomi, A. Moreno, E. Bertolini, and M. Cambra. 2012. Calculation of diagnostic parameters of advanced serological and molecular tissue-print methods for detection of *Citrus tristeza virus*: a model for other plant pathogens. *Phytopathology* 102(1), 114-121. Doi: <https://doi.org/10.1094/PHYTO-05-11-0139>

Viswanath, M., A. Roy, K.A. Prajwala, S.P. Nanda, B.V.K. Bhagavan, and R.R. Kumar. 2021. Virus indexing in banana: a review. *Pharma Innov. J.* 10(6), 1301-1304.