

Evaluation of Load Capacity of Stratified Soils (2 Layers) by Means of Numerical Analytical Comparison

Jairo-Alejandro Quintero-Chamorro; Brayan-Julián Martínez-Ortega;
Lucio-Gerardo Cruz-Velasco

Citation: J.-A. Quintero-Chamorro, B.-J. Martínez-Ortega, L.-G. Cruz-Velasco, "Evaluation of Load Capacity of Stratified Soils (2 Layers) by Means of Numerical Analytical Comparison," *Revista Facultad de Ingeniería*, vol. 30 (55), e12080, 2021.

<https://doi.org/10.19053/01211129.v30.n55.2021.12080>

Received: November 01, 2020; **Accepted:** February 23, 2021;

Published: February 24, 2021

Copyright: This is an open access article distributed under license [CC](#)

[BY](#)



Conflict of interest: The authors state there is no conflict of interest.

Evaluation of Load Capacity of Stratified Soils (2 Layers) by Means of Numerical Analytical Comparison

Jairo-Alejandro Quintero-Chamorro¹

Brayan-Julián Martínez-Ortega²

Lucio-Gerardo Cruz-Velasco³

Abstract

The methods for determining load capacity in stratified soils are numerous and differ in their methods and results. These differences in analysis lead to uncertainty in engineering practices or over-dimensioning of the foundation solution. This study seeks to determine three analytical methods of load capacity in stratified soils (2 layers) for shallow foundations: 1) Imaginary foundation, 2) Average parameter method (APM), and 3) Terzaghi's method to compare their results with those obtained from numerical modeling by means of the finite element method using a widely applied software (Abaqus academic version). Within the methodology developed in the finite element modeling, variables were parameterized (modulus of elasticity, depth of deflection, and displacement-load) and two behavioral laws were evaluated (Elastic and Drucker-Prager). The results that were obtained from the analysis show that when performing numerical modeling using the law of elastic behavior in soils of two layers, exaggerated results are generated with respect to analytical methods. Another important result is that when hard soils are on top of soft

¹ Universidad del Cauca (Popayán-Cauca, Colombia). jairoalejan@unicauca.edu.co. ORCID: [0000-0003-1365-7629](https://orcid.org/0000-0003-1365-7629)

² Universidad del Cauca (Popayán-Cauca, Colombia). bjmartinez@unicauca.edu.co. ORCID: [0000-0002-2221-8444](https://orcid.org/0000-0002-2221-8444)

³ Ph. D. Universidad del Cauca (Popayán-Cauca, Colombia). lucruz@unicauca.edu.co. ORCID: [0000-0003-2438-5526](https://orcid.org/0000-0003-2438-5526)

soils the results of numerical and analytical methods tend to be similar to each other. Most importantly, the variables that have the greatest influence on the load capacity in soils of one and two layers are the angle of friction, yield stress, and in the case of numerical analysis the constraint displacement (load). In addition, it was observed that for numerical modeling better results are obtained when considering an elastoplastic model, such as Drucker Prager.

Keywords: APM; FEM; finite elements; imaginary foundation; load capacity; numerical modeling; stratified soils; Terzaghi method.

Evaluación de capacidad de carga de suelos estratificados (2 estratos) mediante comparativa analítica-numérica

Resumen

Los métodos para encontrar capacidad de carga en suelos estratificados son cuantiosos y difieren en sus métodos y resultados. Lo anterior, hace que exista incertidumbre en la práctica de la ingeniería o que se incurra en sobredimensionamiento de la solución de cimentación. Este trabajo busca estudiar tres métodos analíticos de capacidad de carga en suelos estratificados (2 estratos) para cimentaciones superficiales: 1) Zapata imaginaria, 2) Método de Parámetros Promedio (APM) y 3) Método de Terzaghi, para comparar sus resultados con los obtenidos de la modelación numérica por medio del método de elementos finitos usando un software de amplia aplicación (Abaqus) versión académica. Dentro de la metodología desarrollada en la modelación de elementos finitos se parametrizaron variables (módulo de elasticidad, profundidad de desplante y desplazamiento-carga) y se evaluaron dos leyes de comportamiento (Elástica y Drucker-Prager). Los resultados que se obtuvieron en el desarrollo del análisis apuntan a que al realizar las modelaciones numéricas usando la ley de comportamiento elástica en suelos de dos estratos dan resultados exagerados respecto a los de métodos analíticos, otro resultado importante es que cuando se tiene suelos duros sobre suelos blandos los resultados de métodos numéricos y analíticos tienden a ser similares entre sí. Dentro de las conclusiones más importantes tenemos que las variables que más

influyen en la capacidad de carga en suelos de un estrato y dos estratos son, el ángulo de fricción, esfuerzo de fluencia y en el caso de las modelaciones numéricas el desplazamiento impuesto de falla (carga). Además, se tiene que para las modelaciones numéricas se obtiene mejores resultados cuando se considera un modelo elastoplástico, como Drucker Prager.

Palabras clave: APM; capacidad de carga; elementos finitos; FEM; método de Terzaghi; modelación numérica; suelos estratificados; zapata imaginaria.

Avaliação da capacidade de suporte de solos estratificados (2 estratos) por comparação analítico-numérica

Resumo

Os métodos para encontrar a capacidade de suporte em solos estratificados são numerosos e diferem em seus métodos e resultados. Isso leva à incerteza na prática de engenharia ou ao superdimensionamento da solução de base. Este trabalho visa estudar três métodos analíticos de capacidade de suporte em solos estratificados (2 estratos) para fundações rasas: 1) Base imaginária, 2) Método dos Parâmetros Médios (APM) e 3) Método de Terzaghi, para comparar seus resultados com os obtidos. modelagem numérica por meio do método dos elementos finitos utilizando um software de aplicação ampla (Abaqus) versão acadêmica. Dentro da metodologia desenvolvida na modelagem de elementos finitos, variáveis foram parametrizadas (módulo de elasticidade, profundidade de deflexão e deslocamento-carga) e duas leis comportamentais foram avaliadas (Elastic e Drucker-Prager). Os resultados obtidos no desenvolvimento da análise sugerem que ao realizar a modelagem numérica usando a lei do comportamento elástico em solos de dois estratos, eles dão resultados exagerados em relação aos dos métodos analíticos, outro resultado importante é que quando você tem Solos duros acima de solos moles, os resultados dos métodos numéricos e analíticos tendem a ser semelhantes entre si. Entre as conclusões mais importantes temos que as variáveis que mais influenciam a capacidade de carga em solos de um e dois estratos são o ângulo de atrito, a tensão de escoamento e, no caso de modelos numéricos, o deslocamento

de falta imposto (carga). Além disso, para modelagem numérica, melhores resultados são obtidos quando um modelo elastoplástico é considerado, como Drucker Prager.

Palavras-chave: APM; capacidade de carga; elementos finitos; FEM; método de Terzaghi; modelagem numérica; solos estratificados; sapato imaginário.

I. INTRODUCTION

Foundations are essential for any infrastructure project [1] which must comply with safety regulations while maintaining a balance between service life and budget restrictions as well as environmental factors and imposed design rules. One of the most important elements in a proper foundation is the stratification of the ground beneath the foundation. Poor characterizations of the ground can lead to increased stresses which may result in failure due to general shear failure [2-3]. Most of the calculations described in previous theories consider soil to be homogeneous [4] while disregarding its heterogeneity and providing results which may be unexpected in the field. As a result, this study evaluates the load bearing capacity [5] in stratified soils (two strata) [6, 7-8] using a comparison between three current analytical methods and results from numerical modeling. The analytical methods utilized in the study included Terzaghi [9], Average imaginary foundation [10], and the average parameter method (APM) [11], which differ considerably in their results. As a result, the results obtained will be compared to numerical modeling using the finite element method [12, 13-14] which is obtained when the Prandtl fault surface is formed by increments in controlled displacement.

Numerical modeling is a widely used and studied method applied to engineering foundations as seen in: [12, 18-19]. It is also accepted as a design methodology in some countries including Colombia with its building construction standard: NSR-10. In the finite element modeling of this study, different variables (modulus of elasticity, displacement depth, and displacement-load) were parameterized and two behavioral laws were evaluated (Elastic, Drucker-Prager). These behavioral laws were used to identify the parameters that have the most influence on the calculation of a shallow foundation [15]. Additionally, their insight can be extended to other fields since all infrastructure work requires a foundation providing significant benefits and savings which will generate positive impacts on both the economy and on the safety of the structures.

II. METHODOLOGY

The methodology used in this research study is mainly characterized by using models generated in the Abaqus [16] program and analytical calculations of load capacity. Three load capacity methodologies for stratified soils were chosen: APM, Terzaghi's method, and imaginary footing. These methodologies were chosen since they are the best known and most commonly applied methods in engineering.

The study utilized the General Static Load Carrying Capacity (GSLCC) for each stratum. The soil of each stratum was also modeled using finite element modeling in Abaqus while modifying yield stress [17]. The load capacity in stratified soils (two strata) was found using analytical methods, APM, imaginary footing, and Terzaghi's method and then calculated using the elastoplastic behavior law and applying the Drucker Prager method [18].

The soil thicknesses utilized in the study was $e=0.15\text{m}$ and $e=0.5\text{m}$ while taking into consideration that a thickness below 1m results in a greater probability of the formation of the Prandtl fault [19] which will be used as a point of reference between the analytical and numerical methods.

It is important to note that the ideal values of yield stress are taken from the numerical models carried out using one stratum modeled against two strata. The initial condition resulted in the cohesion in soils of one stratum and two strata being null for both cases **Df=0m** and **Df=0.5m**. In the case of **Df=0.5m** and **e=0.15m** the foundation will be offset in a similar manner. The data from the thickness of the soil layer using analytical methods was not taken into account since it would result in an overload in the numerical modeling.

A. Methodology for Soil of a Stratum

The analytical methods used to evaluate the soil of a stratum model are shown in (Figure 1) while the two-strata model is shown in (Figure 2).



Fig. 1. Identification of the problem, soil of a stratum.

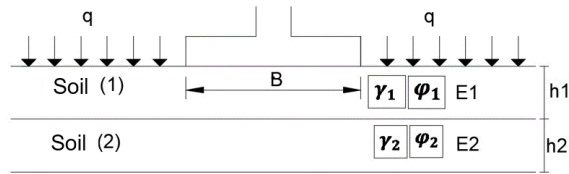


Fig. 2. Identification of the problem, stratified soil (2 strata).

In

Table 1 the data used to modify the model of one stratum and two strata with their respective nomenclatures are shown.

Table 1. Parameterized data.

Nomenclature for the stratum	Nomenclature for two strata	Module [Mpa]	Friction angle [°]
A	E1	9.375	23.22
B	E2	12.5	28.42
C	E3	25	40.1
D	E4	50	54.12

To create the Drucker Prager elastoplastic model in the finite element program, the following input variables are needed as shown in Table 2.

Table 2. Material properties using Drucker Prager.

Density (kg/m ³)	1733.5
Poisson ratio	0.3
Cohesive Strength (kPa)	<1
Friction angle (°) ϕ	23.22
Dilation angle (°) ψ	-6.78
Flow Stress Ratio	1

B. Methodology for Stratified Soil (2 Strata)

Simulations with fine soils on top of thick soils and coarse soils on top of fine soils used the following combinations (Table 3).

Table 3. Soil combination

Soils	Soil 1	Soil 2	Soil 3	Soil 4	Soil 5	Soil 6
Nomenclature	E1/E4	E2/E4	E3/E4	E4/E3	E4/E2	E4/E1

III. RESULTS AND ANALYSIS

The results from the analytical and numerical methods are presented below.

A. Soil of a Stratum

The results of the calculations performed using the numerical and analytical method are presented for a stratum which was modified by yield stress.

1) Calculation of Load Capacity, $D_f=0$ m, $e=0.15$ m. The results from the load capacity calculations using the analytical method of the GSLCC and numerical modeling with finite element software, are presented in Table 4.

Table 4. Summary of results modifying the yield stress, $D_f=0$ m, $e=0.15$ m.

DATA				Drucker Prager Hardening		qu, [kPa]	
ID	U displacement [m]	Angle of dilation [°]	Friction angle [°]	Yield stress [Pa]	Abs Plastic Strain	Abaqus	GSLCC
A	0.015	-6.78	23.22	11984	0	57	43
B	0.015	-1.58	28.42	25172		122	91
C	0.015	10.1	40.1	118271		583	568
D	0.042	24.12	54.12	8637904		11609	10365

The graphical results obtained from entering the model into the finite element software are shown in Fig. 3. The contour diagram of the plastic deformations (PE) is shown in Fig. 4 and includes a contour diagram of vertical forces. Both Figure 3 and 4 correspond to Soil A, with $D_f=0$ m and $e=0.5$ m.

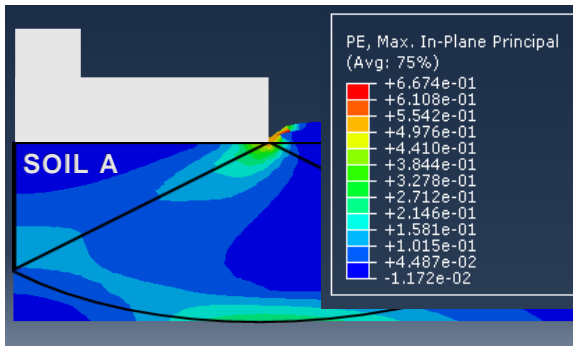


Fig. 3. Plastic deformation contour diagram, PE. Soil A, with $D_f=0$ m, $e=0.5$ m.

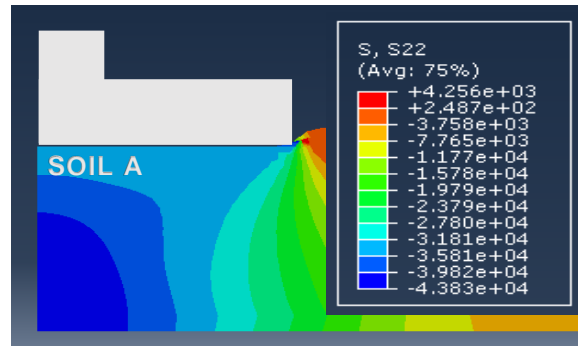


Fig. 4. Vertical stress contour diagram, soil A, $D_f=0$ m, $e=0.5$ m.

2) Calculation of Load Capacity, $D_f = 0$ m, $e = 0.5$ m. The results of load capacity when modifying the yield stress with $D_f=0$ m and $e=0.5$ m are presented in Table 5.

Table 5. Summary of results modifying the yield stress, $D_f=0$ m, $e=0.5$ m.

DATA				Drucker Prager Hardening		qu [kPa]	
ID	U displacement [m]	Angle of dilation [°]	Friction angle [°]	Yield stress [Pa]	Abs Plastic Strain	Abaqus	GSLCC
A	0.05	-6.78	23.22	11984	0	44	43
B	0.05	-1.58	28.42	25172		95	91
C	0.05	10.1	40.1	189234		584	568
D	0.08	24.12	54.12	8637904		10703	10365

3) Calculation of Load Capacity, $D_f=0.5$ m, $e=0.15$ m. The load capacity results from the numerical and analytical modeling are presented with a depth of displacement of $D_f=0.5$ m, and a thickness of $e=0.15$ as shown in Table 6.

Table 6. Summary of results modifying the yield stress, $D_f=0.5$ m, $e=0.15$ m.

DATA				Drucker Prager Hardening		qu [kPa]	
ID	U displacement [m]	Angle of dilation [°]	Friction angle [°]	Yield stress [Pa]	Abs Plastic Strain	Abaqus	GSLCC
A	0.015	-6.78	23.22	36802	0	172	168
B	0.015	-1.58	28.42	70520		330	323
C	0.015	10.1	40.1	499826		1810	1696

DATA				Drucker Prager Hardening		qu [kPa]	
ID	U displacement [m]	Angle of dilation [°]	Friction angle [°]	Yield stress [Pa]	Abs Plastic Strain	Abaqus	GSLCC
D	0.0254	24.12	54.12	2351551		22473	25971

4) Calculation of Load Capacity, $D_f=0.5$ m, $e=0.5$ m. The load capacity results from the values $D_f=0.5$ m and $e=0.5$ m obtained from the numerical and analytical comparison are shown in Table 7.

Table 7. Summary of results modifying the yield stress, $D_f=0.5$ m, $e=0.15$ m.

DATA				Drucker Prager Hardening		qu [kPa]	
ID	U displacement [m]	Angle of dilation [°]	Friction angle [°]	Yield stress [Pa]	Abs Plastic Strain	Abaqus	GSLCC
A	0.05	-6.78	23.22	49070	0	180	168
B	0.05	-1.58	28.42	94026		346	323
C	0.04	10.1	40.1	749738		1629	1696
D	0.2	24.12	54.12	11757757		24530	25971

Figures 5 to 8 show the results from the GSLCC and numerical modeling while considering the variation in its modulus of elasticity for soil with a thickness of $e=0.5$ m and a depth of deflection of $D_f=0$ m. The results of the numerical models are superior to those obtained from the GSLCC method which suggest that as the modulus of elasticity increases, the load capacity increases. Additionally, for the first two modules which are considered fine soils, the behavior of the data obtained from the numerical modeling software is similar to that of the analytical results. This suggests that as the depth of the soil increases there is minimal variation in the data whereas in soils with higher elastic moduli or hard soils, the behavior of the data varies considerably as depth increases.

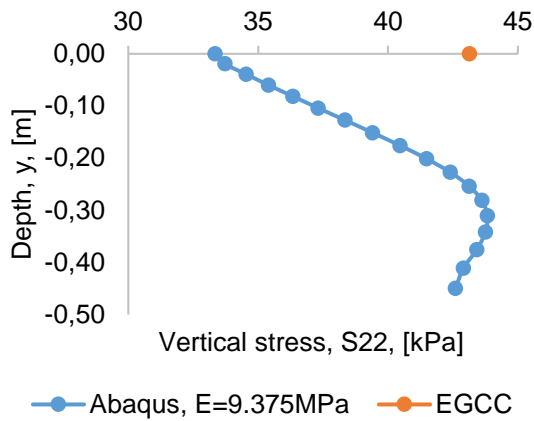


Fig. 5. Vertical stress vs. depth, $E=9.375\text{MPa}$, $D_f=0\text{m}$, $e=0.5\text{m}$

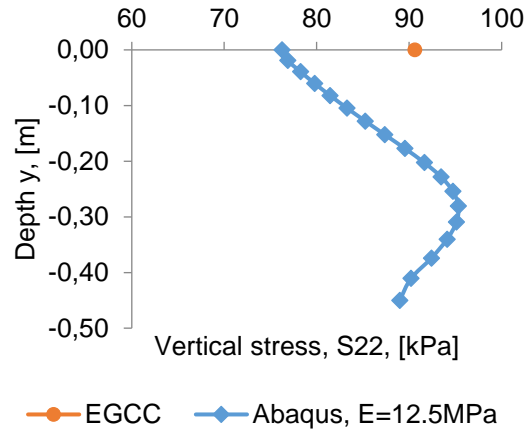


Fig. 6. Vertical stress vs. depth, $E=12.5\text{MPa}$, $D_f=0\text{m}$, $e=0.5\text{m}$

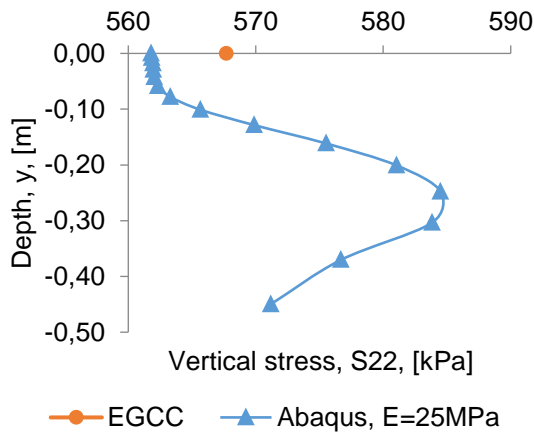


Fig. 7. Vertical stress vs. depth, $E=25\text{MPa}$, $D_f=0\text{m}$, $e=0.5\text{m}$

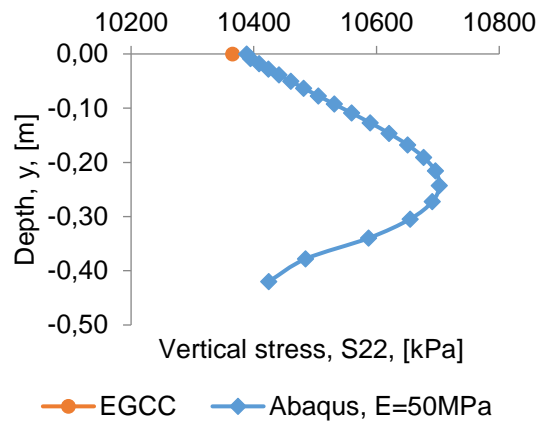


Fig. 8. Vertical stress vs. depth, $E=50\text{MPa}$, $D_f=0\text{m}$, $e=0.5\text{m}$

B. Stratified Soil (2 Strata)

The results of the analytical methods (APM, Terzaghi, and imaginary foundation) and numerical methods (Abaqus) for two strata with varying depths of displacement and thicknesses are shown below. The numerical models and analytical calculations were calculated for a $D_f=0\text{ m}$ with a thickness of $e=0.15\text{ m}$ are shown in

Table 8.

Table 8. Results of numerical modeling and analytical methods, Df=0 m, e=0.15 m.

Soils	Abaqus [kPa]	APM [kPa]	Imaginary foundation [kPa]	Terzaghi Method [kPa]
1	58	8328	43	
2	122	8812	91	
3	577	9730	568	
4	613	580	1279	1096
5	111	94	221	178
6	43	45	110	84

The graphic results of the stratified soil (2 strata) of soil combination 1 Df=0 m and e=0.5 m, are shown as a contour diagram of plastic deformations in Fig. 9 and of vertical forces in Fig. 10.

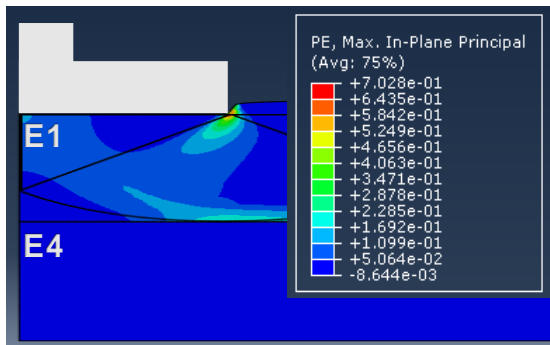


Fig. 9. Plastic deformation contour diagram, soil 1, Df=0.5 m, e=0.5 m.

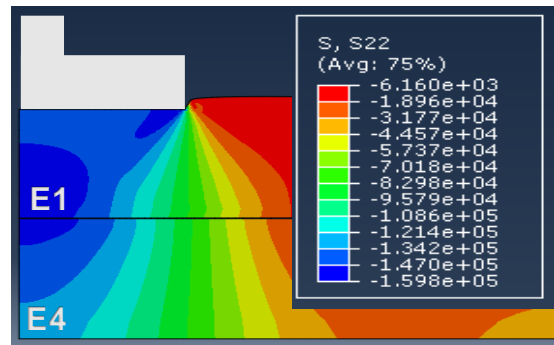


Fig. 10. Vertical stress contour diagram, Soil 1, Df=0.5 m, e=0.5 m.

For the results of the numerical modeling and analytical calculations with a Df=0 m and e=0.5 m, the results are shown in

Table 9.

Table 9. Results of numerical modeling and analytical methods, Df=0 m, e=0.5 m.

Soils	Abaqus [kPa]	APM [kPa]	Imaginary foundation [kPa]	Terzaghi Method [kPa]
1	40	5128	43	

Soils	Abaqus [kPa]	APM [kPa]	Imaginary foundation [kPa]	Terzaghi Method [kPa]
2	81	6120	91	
3	565	8414	568	
4	573	612	4372	1592
5	52	102	805	279
6	31	49	413	130

The results of the analysis using a $D_f=0.5$ m, for an $e=0.15$ m as shown in Tabla 10.

Tabla 10. Results of numerical modeling and analytical methods, $D_f=0.5$ m, $e=0.15$ m.

Soils	Abaqus [kPa]	APM [kPa]	Imaginary foundation [kPa]	Terzaghi Method [kPa]
1	165	21821	168	
2	328	22789	323	
3	1464	24645	1696	
4	1463	1727	291	1719
5	326	332	52	327
6	149	173	26	169

The results of using a $D_f=0.5$ m and $e=0.5$ m are shown in Table 11.

Table 11. Results of numerical modeling and analytical methods, $D_f=0.5$ m, $e=0.5$ m.

Soils	Abaqus [kPa]	APM [kPa]	Imaginary foundation [kPa]	Terzaghi Method [kPa]
1	152	14805	168	
2	291	16975	323	
3	1537	21845	1696	
4	1383	1804	1697	2437
5	272	354	323	489
6	117	186	168	248

The analysis of two strata while taking into account the Drucker Prager criterion are shown in

Table 8 to Table 11 and are composed of soils 1, 2, and 3. The load capacity determined using the finite element method and Imaginary foundation are very similar while the results from the APM method are notably higher. This is due to the fact that this method in theory [20], says that better results are obtained when hard soil is on top of soft soil. This clarification is made again in the Terzaghi method which omits a combination of the first three soils since it has not been defined for these soil structures.

An analysis of hard soils on top of soft soils are represented by the combinations of the last three rows of Tables 9 to 12.

When comparing the results obtained from the Terzaghi and APM methods shown in Table 10, the APM method has a greater value than the reference value obtained in Abaqus. This is the contrary to the value obtained using the Imaginary foundation method which gives a lower value than that of Abaqus. A unique case is presented in soil combination 5 which demonstrates a difference in the results between the analytical method (Terzaghi's method) and the numerical method (Abaqus) which is less than 1.

The results of soils 4 and 5 and are about the Imaginary foundation and Terzaghi method are lower than those of Abaqus. This contrasts the results using the APM method in which the Abaqus results are higher as shown in

Table 8. Furthermore, for soil 6 all of the results from the analytical methods are greater than the numerical methods.

The values obtained from the modeling in Abaqus are lower than the results using analytical methods as shown in Table 11; however, in Table 11 the values are closest to Abaqus. The values increased with the imaginary foundation method being closest, followed by the APM, and the Terzaghi method having the greatest difference. In the case of

Table 9, the values from the analytical methods closest to the numerical ones are those obtained using the APM method. This method resulted in a difference between

38 and 49 kPa, followed by the Terzaghi method with a difference between 227 and 1019 kPa, and finally the imaginary foundation method with results which are further from those found using Abaqus.

IV. CONCLUSIONS

After the numerical and analytical calculations had been performed, it was concluded that the variables that primarily influence the loading capacity in soils of one stratum and two strata are the friction angle, yield stress, and failure displacement (load - boundary condition). The most resistant soils do not fully plasticize (high yield stress values) because they do not achieve the levels of deformation necessary to cause failure. This suggests that it would be necessary to reach very high levels of deformation that cannot be represented with the conventional finite element method. When meshing is performed, finer materials provide better rendering levels, but result in more computational time to create the model in the program. Gravity must be considered in the finite element model in order for the model to have a natural geostatic behavior. The APM method and the numerical modeling method provide the best approximate for what would be physically and semi-empirically expected in a stratified soil structure (2 strata) with a hard soil on top of a soft soil for the evaluation of bearing capacity using elastoplastic behavior. On the other hand, the imaginary footing analytical method and the numerical modeling method are the best for determining what is to be physically expected semi-empirically when there is a soft soil on top of a hard soil. The results of the APM method for soft soils on top of hard soils do not represent results that agree with other methods and the respective values that would be physically expected in the field. As a result, it is not recommended to take these results into account as a design method in the latter case. Finally, this study highlights that the Prandtl fault is reproduced or formed in detail in numerical models when the modeled soil thickness is less than 1m.

AUTHOR'S CONTRIBUTIONS

Jairo-Alejandro Quintero-Chamorro: Investigation, Validation, Visualization, Writing—original draft.

Brayan-Julián Martínez-Ortega: Investigation, Validation, Visualization, Writing—original draft.

Lucio-Gerardo Cruz-Velasco: Conceptualization, Funding Acquisition, Methodology, Validation, Visualization, Project administration, Writing-review & editing.

ACKMOLEGEMENT

To the Universidad del Cauca, which financed the research work in the form of an internal call.

REFERENCES

- [1] B. Das, N. Sivakugan, *Principles of foundation Engineering*. Boston: Cengage Learning, 2019, pp. 2.
- [2] L. Cruz. 042082. Class Lecture, Topic: "Load Capacity." School of Civil Engineering, University of Cauca, Popayan, 2007.
- [3] C. Le, "Estimation of bearing capacity factors of cohesive-frictional soil using the cell-based smoothed finite element method," *Computers and Geotechnics*, vol. 83, pp. 178-183, Mar. 2017. <https://doi.org/10.1016/j.compgeo.2016.10.023>
- [4] S. Eshkevari, A. Abbo, G. Kouretzis, "Bearing capacity of strip footings on sand over clay," *Canadian Geotechnical Journal*, vol. 56, no. 5, pp. 699-709, May. 2019. <https://doi.org/10.1139/cgj-2017-0489>
- [5] J. Lee, S. Jeong, J. Shang, "Undrained bearing capacity of ring foundations on two-layered clays," *Ocean Engineering*, vol. 119, pp. 47-57, Jun. 2016. <https://doi.org/10.1016/j.oceaneng.2016.04.019>
- [6] P. Rao, Y. Liu, J. Cui, "Bearing capacity of strip footings on two-layered clay under combined loading," *Computers and Geotechnics*, vol. 69, pp. 210-218, Sep. 2015. <https://doi.org/10.1016/j.compgeo.2015.05.018>
- [7] S. Feng, X. Ding, Q. Zheng, Z. Chen, D. Zhang, "Extended stiffness matrix method for horizontal vibration of a rigid disk embedded in stratified soils," *Applied Mathematical Modelling*, vol.77, pp. 663-689, Jan. 2020. <https://doi.org/10.1016/j.apm.2019.07.035>
- [8] H. Kou, W. Guo, M. Zhang, Y. Xu, "Axial resistance of long rock-socketed bored piles in stratified soils," *Ocean Engineering*, vol. 8, pp. 58-65, Sep. 2016. <https://doi.org/10.1016/j.pisc.2016.06.080>
- [9] R. Casusol, "Análisis comparativo de la capacidad de carga para un suelo granular empleando métodos analíticos y computacionales," Grade Thesis, Pontificia Universidad Católica del Perú, Lima, 2020. <http://hdl.handle.net/20.500.12404/16778>

- [10] L. Cruz. 042082. Class Lecture, Topic: "Imaginary Foundation." School of Civil Engineering, University of Cauca, Popayan, Sep. 2018.
- [11] J. Duque, C. Lascarro, M. Gil, O. Garcia, W. Fuentes, "An extended bearing capacity equation for shallow foundations on granular trenches in soft soil," *Acta Geotechnica Slovenica*, vol. 17, pp. 1-29, 2020. <https://doi.org/10.18690/actageotechslov.17.1.12-22.2020>
- [12] M. Huang, X. Qu, X. Lü, "Regularized finite element modeling of progressive failure in soils within nonlocal softening plasticity," *Computational Mechanics*, vol. 62, pp. 347-358, Sep. 2018. <https://doi.org/10.1007/s00466-017-1500-6>
- [13] Y. Chok, M. Jaksa, W. Kaggwaa, D. Griffiths, "Assessing the influence of root reinforcement on slope stability by finite elements," Chok *et al. Geo-Engineering*, vol. 6, pp. 6-12, Oct. 2015. <https://doi.org/10.1186/s40703-015-0012-5>
- [14] J. Tamayo, A. Awruch, "On the Validation of a Numerical Model for the Analysis of Soil-Structure Interaction Problems," *Latin American Journal of Solids and Structures*, vol. 13, pp. 1545-1878, Apr. 2016. <https://doi.org/10.1590/1679-78252450>
- [15] N. Le, S. Ohtsuka, T. Hoshina, K. Isobe, "Discussion on size effect of footing in ultimate bearing capacity of sandy soil using rigid plastic finite element method," *Soils and Foundations*, vol. 56, pp. 1-11, 2016. <https://doi.org/10.1016/j.sandf.2016.01.007>
- [16] M. Pérez, "Modelación de la capacidad de carga de cimentaciones superficiales apoyados en suelos no homogéneos," Grade Thesis, Universidad Central "Marta Abreu" de Las Villas, Santa Clara, Cuba, 2016.
- [17] S. Koltuk, J. Song, R. Iyisan, R. Azzam, "Seepage failure by heave in sheeted excavation pits constructed in stratified cohesionless soils," *Frontiers of Structural and Civil Engineering*, vol. 13, pp. 1415-1431, Dec. 2019. <https://doi.org/10.1007/s11709-019-0565-z>
- [18] M. Hamlaoui, A. Oueslati, B. Lamri, G. Saxcé, "Finite element analysis of the plastic limit load and the collapse mechanism of strip foundations with non-associated Drucker-Prager model," *European Journal of Environmental and Civil Engineering*, vol. 19, pp. 1179-1201, 2015. <https://doi.org/10.1080/19648189.2015.1005162>
- [19] A. Mosadegh, H. Nikraz, "Bearing Capacity Evaluation of Footing on a Layered - Soil using ABAQUS," *Earth Science & Climatic Change*, vol. 6, pp. 264-272, 2015. <https://doi.org/10.4172/2157-7617.1000264>
- [20] L. Quesada, "Determinación de la capacidad de carga en cimentaciones superficiales sobre bases estratificadas en suelos friccionales," Grade Thesis, Universidad Central "Marta Abreu" de Las Villas, Santa Clara, Cuba, 2017.